

A Working Forester's View of Shortleaf Pine: Its Loss & Bright Future at its Northern Limits

Bob Williams CF



Potential for high quality trees in New Jersey



ATLANTIC COUNTY 2007

Typical fire excluded unmanaged stands in New Jersey



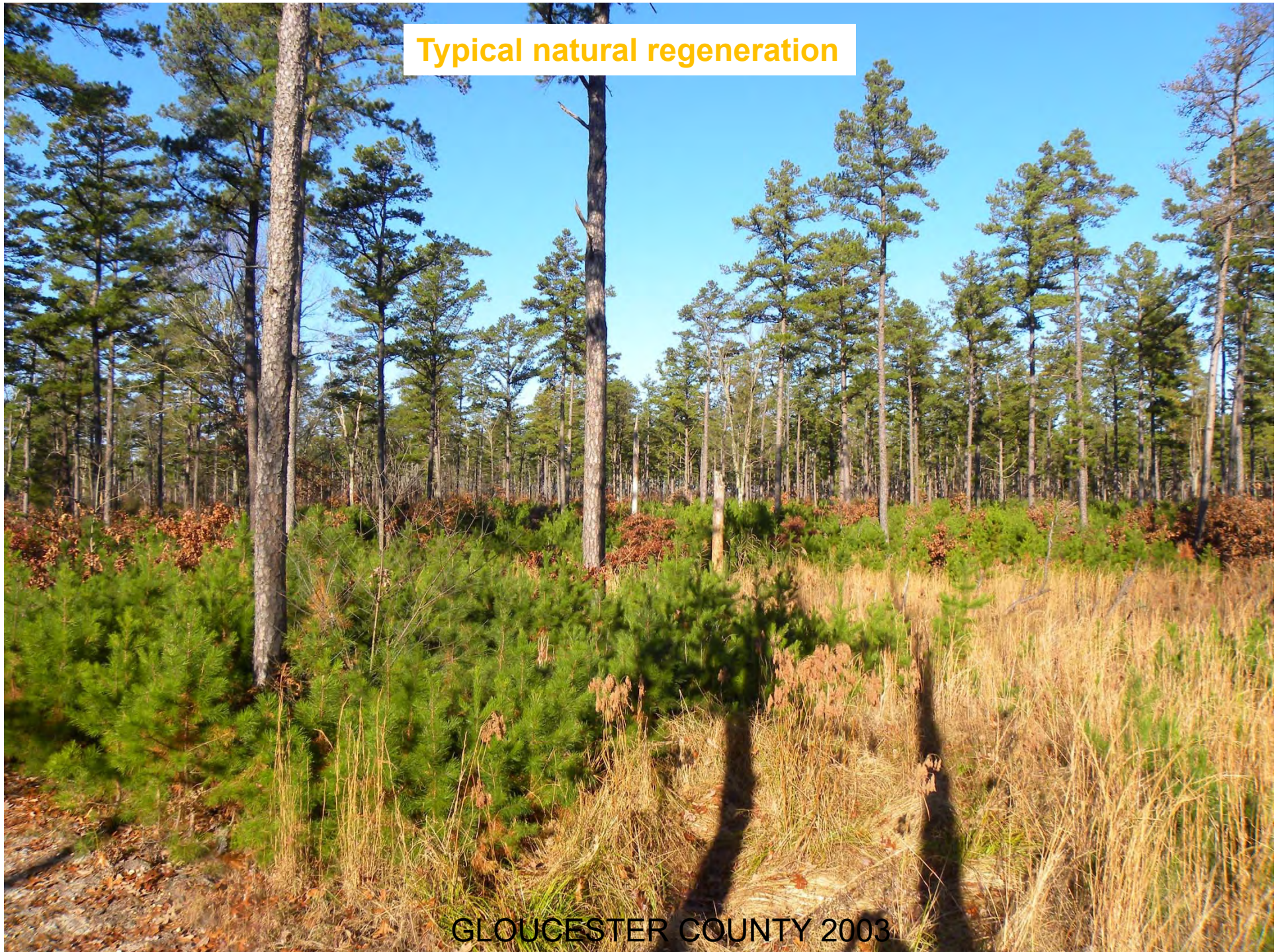
ATLANTIC COUNTY 2007



Results of thinning treatment

ATLANTIC COUNTY 2007

Typical natural regeneration



GLOUCESTER COUNTY 2003

Thinned planted trees



GLOUCESTER COUNTY 2012

Herbaceous growth in thinned stands



GLOUCESTER COUNTY 2010

Tractor thinning



CUMBERLAND COUNTY 2010



CUMBERLAND COUNTY 2011



Beginning of understory growth

CUMBERLAND COUNTY 2012

Natural regeneration in an oak dominated stand



CUMBERLAND COUNTY 2014

A photograph of a forest with several tall, slender pine trees in the foreground and a dense stand of shorter trees in the background. The ground is covered with dry, brown leaves and pine needles. The sky is clear and blue.

Pitch pine-shortleaf pine association

BURLINGTON COUNTY 2013



Weeding oak

GLOUCESTER COUNTY 2014



Burning

ATLANTIC COUNTY 2009



Understory after burn

ATLANTIC COUNTY 2011



First burn after treatment

ATLANTIC COUNTY 2010



ATLANTIC COUNTY 2010

