



Photo Credit | Greg Dimilijan

CUMBERLAND PLATEAU STEWARDSHIP FUND



Shortleaf Pine Biennial Conference
Thursday, September 24, 2015



ABOUT NFWF

WHO WE ARE

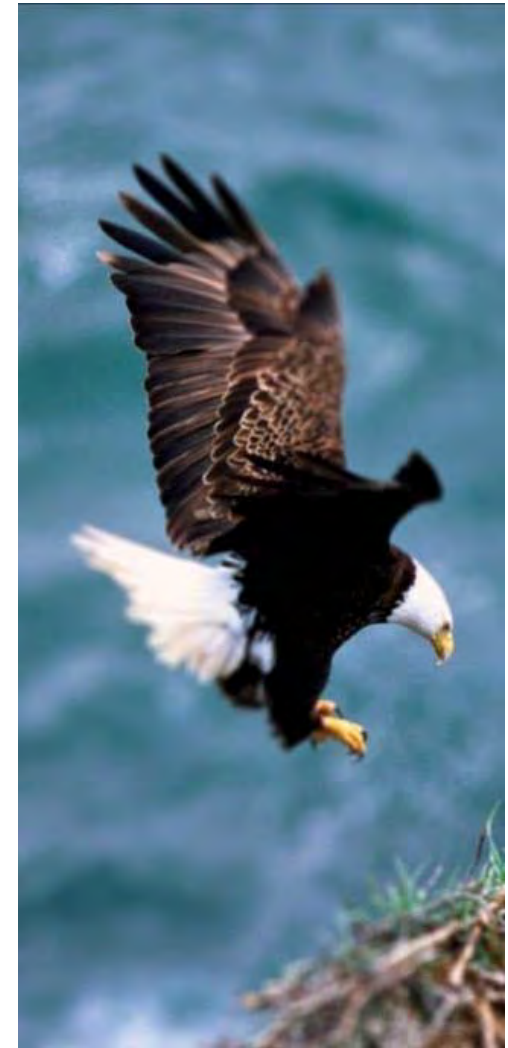
- Chartered by Congress in 1984
- 30 member Board appointed by Secretary of the Interior
 - Includes FWS Director & NOAA Administrator

WHAT WE DO

- Sustain, restore, enhance the nation's natural heritage
- Bring collaboration among federal agencies & private sector
- Create common ground among diverse interests

HOW WE DO IT

- Leverage public funding with private money – average 3:1
- On-the-ground conservation projects through grant making



NFWF

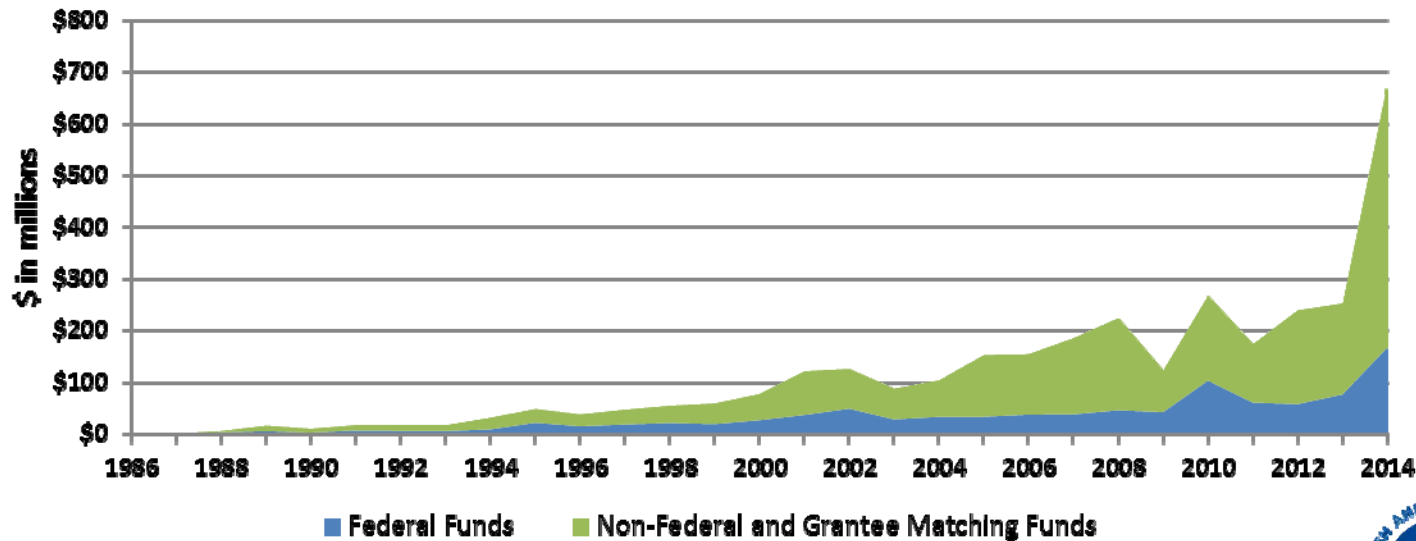
HOW WE DO IT



OUR RESULTS

Overview of NFWF Funds Invested

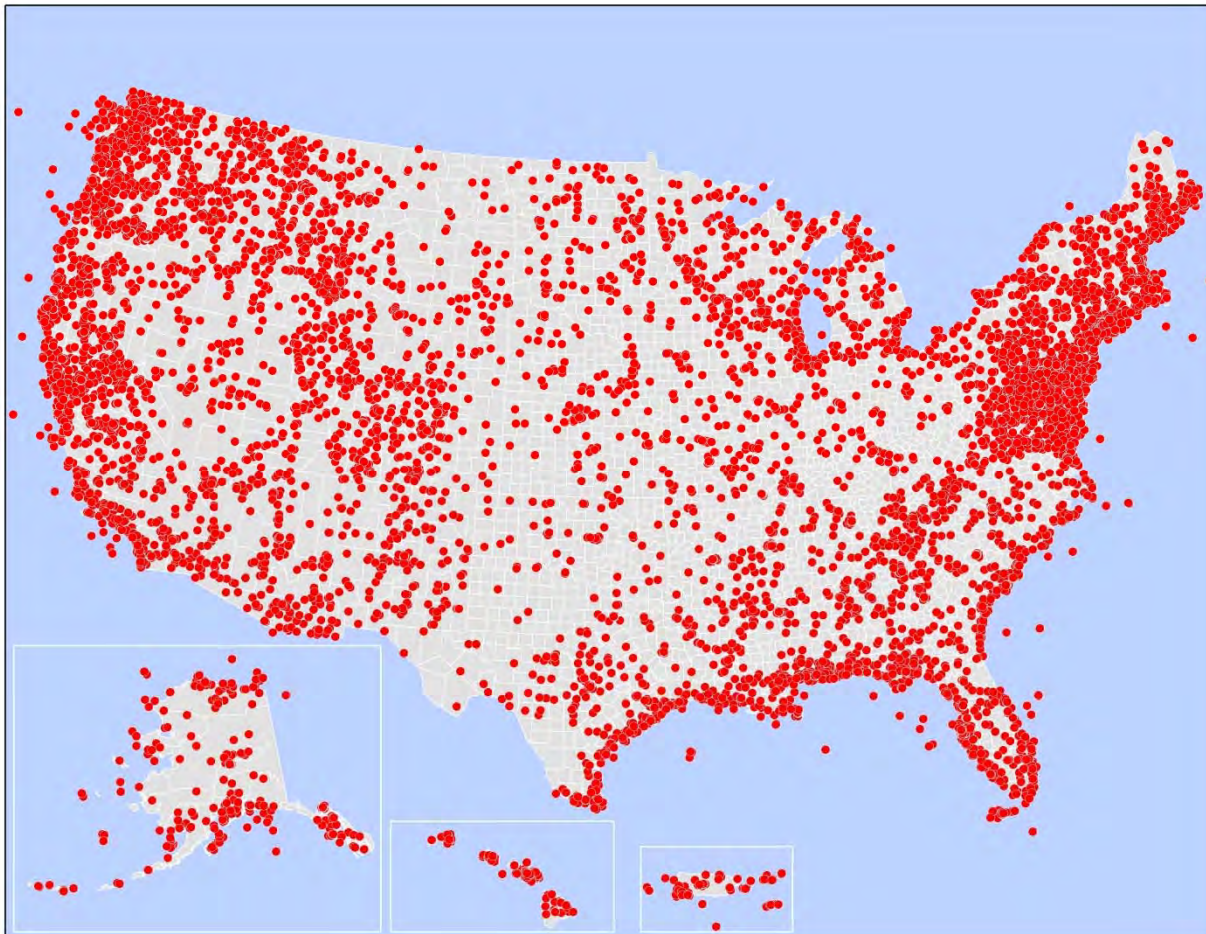
	FY 2013	FY 2014	FY 1984 – FY 2014
Federal Funds	\$ 74.7 million	\$ 166 million	\$ 834 million
Non-Federal Funds	\$ 45.3 million	\$ 330 million	\$ 594 million
Grantee Matching Funds	\$ 126.9 million	\$ 172 million	\$ 1.5 billion
Total Funds Invested	\$ 246.9 million	\$ 668 million	\$ 2.9 billion
# of Projects Awarded	697	805	14,563



**NFWF
Conservation
Investments
FY 1984 – FY 2014**



NFWF CONSERVATION INVESTMENTS (1984 – 2013)



- 12,500 investments
- 4,000 organizations
- All 50 states

PROGRAM OVERVIEW

What is the **CUMBERLAND PLATEAU STEWARDSHIP FUND?**

A partnership between...

- International Paper (Forestland Stewards Initiative)
- USDA Natural Resources Conservation Service
- Alcoa Foundation
- Altria Group
- National Fish and Wildlife Foundation

That does the following...

- Accelerates** restoration and enhancement of native forests and freshwater habitats
- Supports** the recovery of species representative of healthy, sustainable woodland/savanna forests and freshwater systems
- Implements** the Business Plan for the Forestland Stewards Initiative
- Supports** the goals and missions of each funding partner



Cumberland Plateau Stewardship Fund

- Daniel Boone NF
- Catoosa WMA
- Sundquist WMA
- Royal Blue WMA
- S. Fork Cumberland River
- Upper Cumberland
- Buck & Sinking Creeks
- Emory River

- Green River Watershed

- Elk River
- Duck River

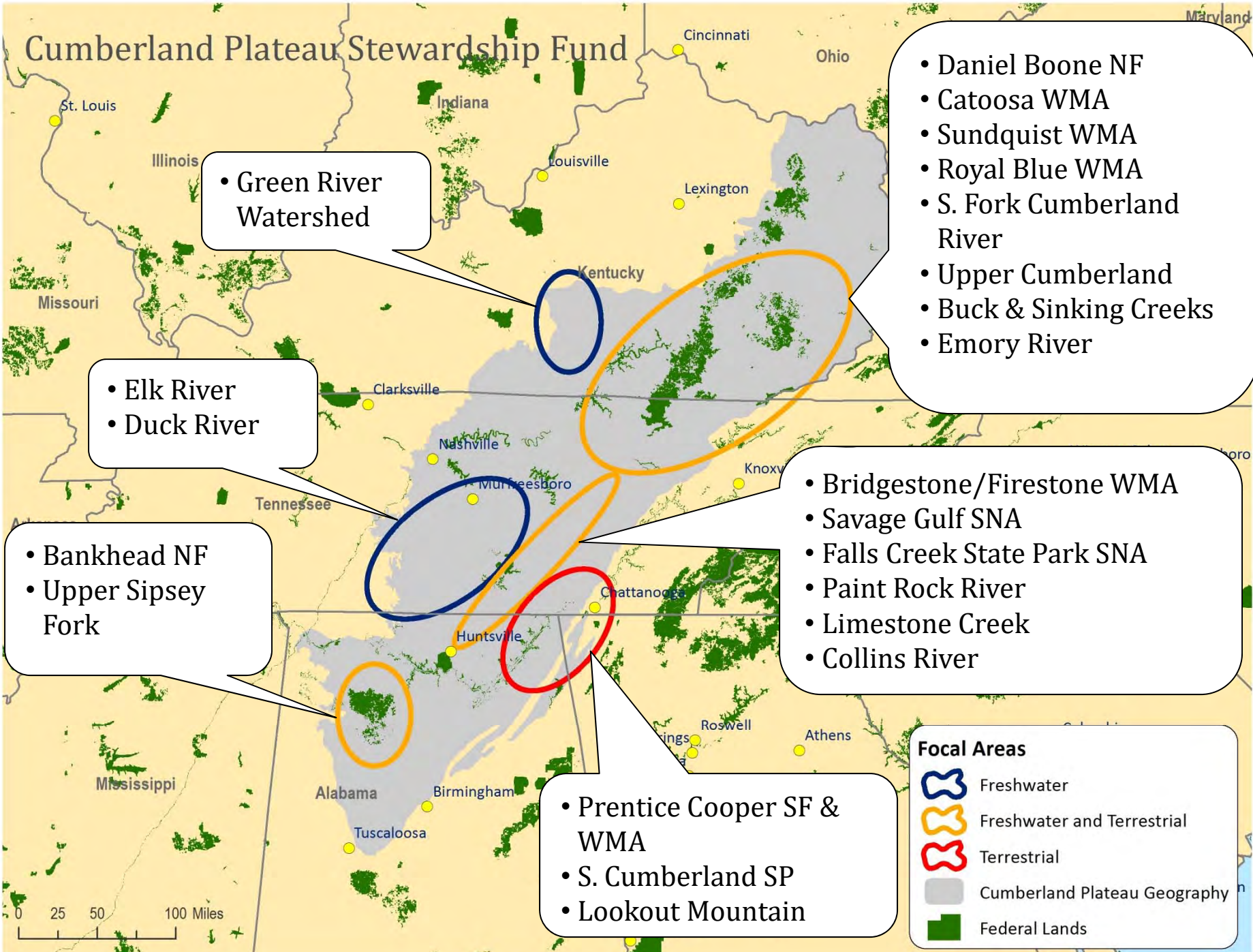
- Bankhead NF
- Upper Sipsey Fork

- Bridgestone/Firestone WMA
- Savage Gulf SNA
- Falls Creek State Park SNA
- Paint Rock River
- Limestone Creek
- Collins River

- Prentice Cooper SF & WMA
- S. Cumberland SP
- Lookout Mountain

Focal Areas

-  Freshwater
-  Freshwater and Terrestrial
-  Terrestrial
-  Cumberland Plateau Geography
-  Federal Lands

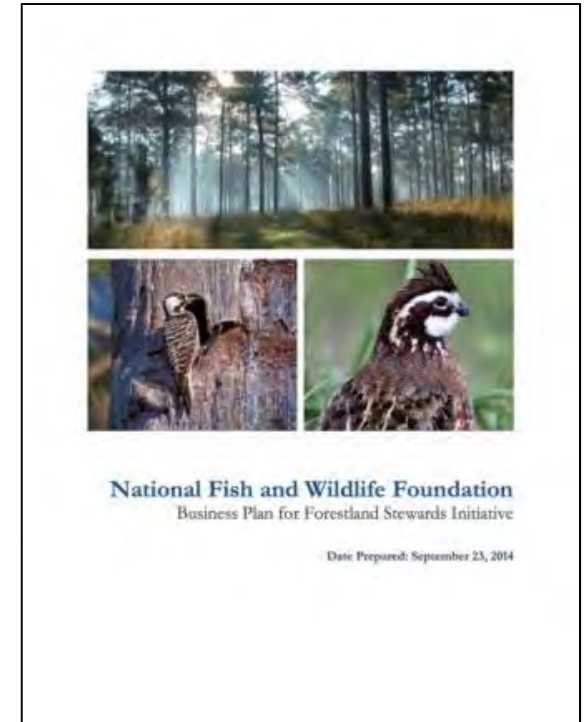


PROGRAM OVERVIEW

What are the program's objectives?

The Cumberland Plateau Stewardship Fund seeks to achieve the following conservation outcomes...

1. Restore **3,500 acres** of shortleaf pine/upland savanna forest.
2. Enhance **50,000 acres** of shortleaf pine/upland savanna ecosystem on public and private lands.
3. Restore/enhance **2,000 acres** of riparian forest.
4. Protect **1,000 acres** of working forests and/or riparian forests with conservation easements.
5. Improve management of **1,000 miles** of stream and associated stream habitat.



PROGRAM OVERVIEW

What are the program's objectives?

5. Increase populations of northern bobwhite quail and prairie warbler, as well as fish, amphibians and other aquatic species, representative of healthy, sustainable woodland/savanna forests and freshwater systems.
6. Engage more than **1,000 private landowners** in restoration and enhancement activities.



PROGRAM OVERVIEW

Where should projects take place?

Projects should occur in the following states...

Alabama

Georgia

Kentucky

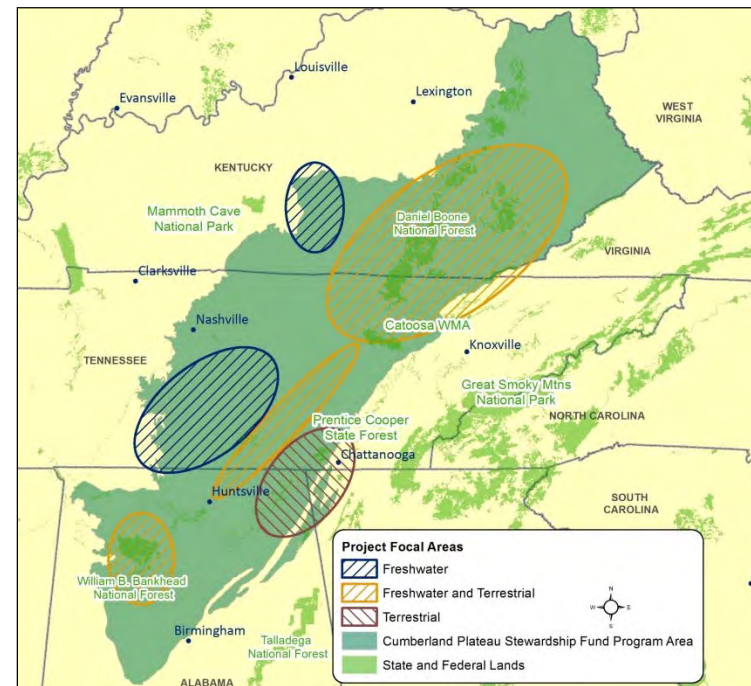
Tennessee

Lands eligible for funding include:

- Privately-owned lands
- State and local government lands
- Federal lands (must be part of projects where state, local and/or private lands are also included)

Applicants must be one of the following:

- Non-profit 501(c)
- State, tribal and local governments
- Academic institutions



Cumberland Plateau Landscape

Federal agencies cannot directly apply, but may partner on proposals



PROGRAM OVERVIEW

Funding Availability:

- Grant awards will range from \$50,000 to \$200,000, depending on the overall scale of the project.

To be eligible for funding, proposals must adhere to the following:

1. Have **at least** 1:1 match ratio of non-federal cash or in-kind services
2. Project periods **up to two years**, with significant deliverables achieved in year one

PROGRAM SPECIFICS

What are the program's funding priorities?

1. Restoring Shortleaf Pine/Native Upland Savanna Forest

2. Enhancing and Maintaining Existing Shortleaf Pine/Native Upland Savanna

3. Restoring and Enhancing Riparian Forests and Watersheds

4. Expanding and Coordinating Technical Assistance and Outreach

5. Conservation Easements



PROGRAM SPECIFICS

1. Restoring Shortleaf Pine/Native Upland Savanna

- Includes necessary site prep

2. Enhancing and Maintaining Existing Shortleaf Pine/Native Upland Savanna

- **Prescribed Fire and Fire Maintenance**
 - Teams or strategies that promote coordination and collaboration to create efficiencies and expand capacity
 - Training, technical assistance and incentives to increase Rx fire acres and frequency on private lands
 - Identify and address specific barriers or roadblocks to fire introduction
- **Additional Restoration and Maintenance Strategies**
 - Thinning, invasive species control, mechanical and/or chemical treatments, planting native understory species



PROGRAM SPECIFICS

3. Restoring and Enhancing Riparian Forests and Watersheds

- Planting native species along riparian corridors.
- Installing fencing and alternative watering systems to exclude livestock from streams.
- Controlling invasive species, such as hemlock woolly adelgid, which threaten riparian forest health.
- Conducting stream barrier surveys within focal watersheds to determine priorities for future connectivity restoration. Proposals should include an initial implementation component. Priority activities may include, but are not limited to:
 - Removing or retrofitting stream barriers, with an emphasis on lower cost/high gain methods in locations known to fragment habitat for priority species.
 - Removing low-head dams and replacing hardened concrete fords in locations widely acknowledged as high conservation priorities.
 - Re-routing stream channels around sediment-filled lake dams, and/or installing fish passageways where other barriers limit movement in priority stream reaches.



PROGRAM SPECIFICS

4. Expanding and Coordinating Technical Assistance and Outreach

Priority will be given to projects that:

I. Increase “boots on-the-ground”

- Increase coordination and delivery of technical assistance (TA), including additional TA providers (additional staff, contractors, etc.)
- Address technical assistance gaps
- Complement and enhance existing efforts to integrate, coordinate and improve delivery of TA, planning, signup, on-the-ground work and monitoring
- Address strategic priorities defined by relevant stakeholders and local implementation teams
- Demonstrate that “boots on-the-ground” efforts will be aligned with other TA tools such as NRCS cost-share and other stewardship programs

II. Advancing New Market-based and/or incentive programs

- Stimulate landowner participation in shortleaf/upland savanna and/or riparian forest restoration efforts
- Coupling new incentive payments with existing cost-share programs
- Enhance restoration and maintenance activities

III. Third-party forest certification

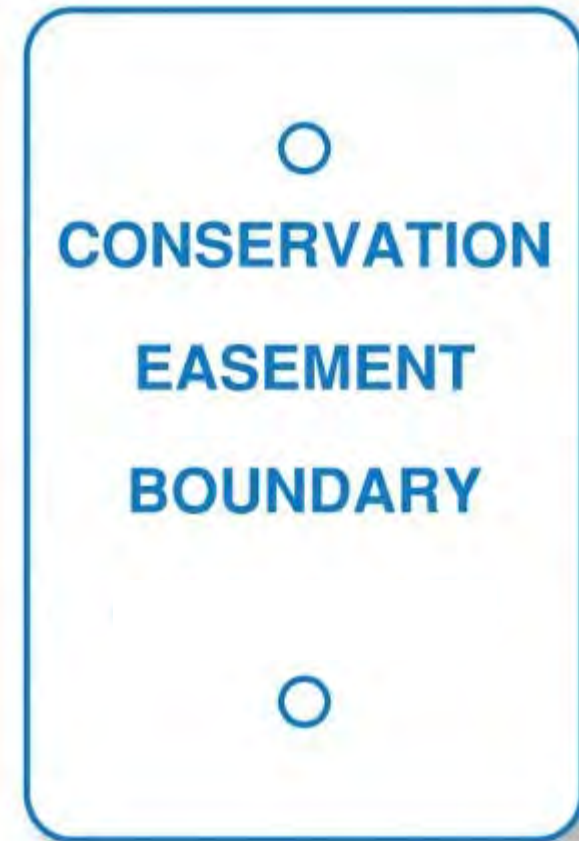
- Increase participation in third-party forest certification programs to encourage sustainable forest management practices for shortleaf pine ecosystem and associated wildlife



PROGRAM SPECIFICS

5. Conservation Easements

- Targeted land conservation projects that protect high quality, existing shortleaf pine/upland savanna and/or riparian habitat, or key sites targeted for shortleaf and/or riparian forest restoration and are part of larger shortleaf and/or riparian forest restoration proposals
- Transaction costs
- Requests for conservation easement funding should not exceed 20% of the total proposal request



PROGRAM OVERVIEW

2013 - 2015 GRANTS – TOTAL OUTCOMES

Overall, in three years ...

- 14 projects in 4 states awarded more than \$1.7 million
- Over \$4 million in additional funds leveraged

In total, these projects will...

- **Restore** more than 5,200 acres of shortleaf/upland savanna
- **Improve** more than 47,600 additional acres of forest habitat
- **Protect** 850 acres of shortleaf savanna and riparian forest through conservation easements and fee-simple acquisition
- **Educate** more than 2,300 private landowners on shortleaf/upland savanna and/or riparian restoration and resources
- **Engage** more than 230 private landowners in stewardship programs



Project Example

PROPOSAL COMPOSITION

Cumberland Shortleaf and Woodland Savanna Restoration (KY, TN)

National Wild Turkey Federation

Geographic Focus	Daniel Boone NF, N. Cumberland WMA and surrounding counties
Grant Award	\$217,000
On-the-Ground Restoration	Plant 49 acres of shortleaf on public lands
Habitat Management	Prescribed burning and mechanical treatments on 15,400 additional acres, as well as creation of patchwork openings. Improve habitat for the golden-winged warbler, cerulean warbler and foraging bat species.
Technical Assistance/Outreach	Create demonstration areas to educate at least 500 landowners
Capacity Building	Outreach efforts will help promote the current TN NRCS Shortleaf Pine Initiative, KY NRCS Southeast Kentucky Early Successional Habitat Initiative, and other private lands conservation programs.



Project Example

PROPOSAL COMPOSITION

Cumberland Plateau Private Lands Capacity (TN)

Quail Forever, Inc.

Geographic Focus	Van Buren, Bledsoe, White, Sequatchie, Grundy, Fentress, Morgan, and Cumberland counties
Grant Award	\$59,800
On-the-Ground Restoration	Establish 400 acres of shortleaf pine on private lands
Habitat Management	Prescribed burning and mechanical treatments on 8,000 additional acres, as well as creation of patchwork openings. Improve habitat for the golden-winged warbler, cerulean warbler and foraging bat species.
Technical Assistance/Outreach	Create demonstration areas to educate at least 500 landowners and enroll 100 landowners in farm bill programs
Capacity Building	Farm Bill Biologist will work out of NRCS office and provide technical assistance to private landowners interested in restoring and managing shortleaf pine and riparian buffers.



PROPOSAL TIPS

What makes a competitive proposal?

1.Conservation Outcomes: All projects must include specific quantitative metrics that will be tracked and measured to evaluate project success. On-the-ground outcomes are key!

2.Fund Need: Explain how funding is **essential** for activities to move forward.

3.Conservation Plan and Context: Relevance to existing conservation plan (Shortleaf Restoration Plan) or strategy benefitting shortleaf/native upland savanna. Proposals should address how the project advances the priorities and acreage and species goals outlined in the Business Plan for Forestland Stewards Initiative.

4.Critical Species Benefit: Benefits species, representative of healthy, sustainable woodland/savanna forests and freshwater systems.

5.Partnerships: Demonstrate appropriate partnership exists or is developing to successfully implement project.

6. Cost-Effectiveness/Efficiency: Clear, cost-effective and efficient budget that maximizes the conservation outcomes achieved and includes matching sources coming from diverse sources.

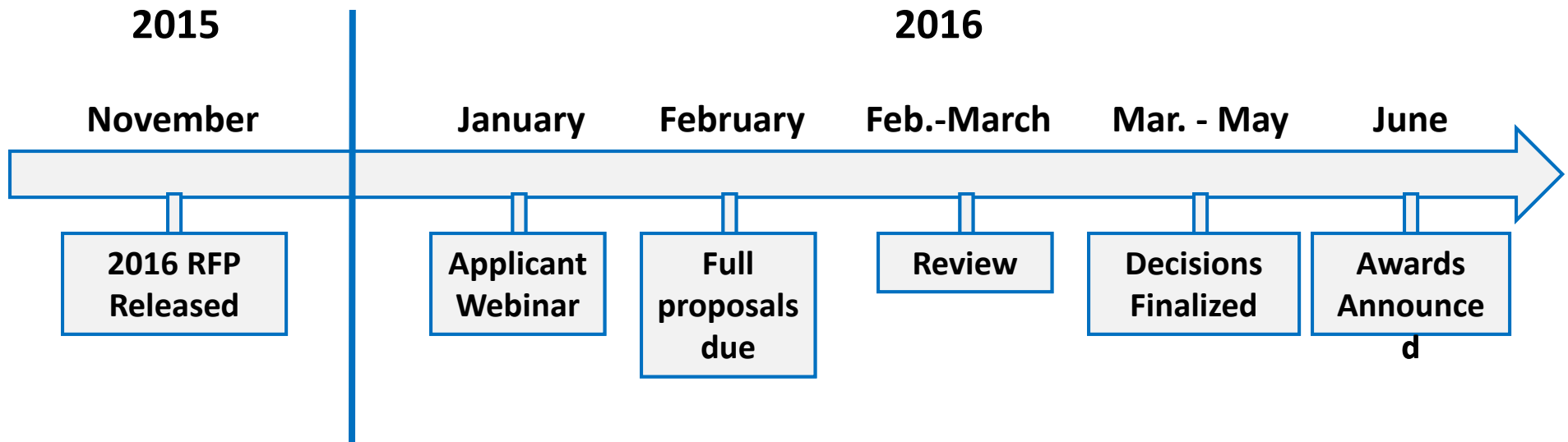


PROPOSAL COMPOSITION

7. **Technical Merit:** Project will engage technical expertise throughout project planning, design and implementation
8. **Monitoring:** Monitor project progress during and after project period
9. **Long-term Sustainability:** Describe project maintenance post grant period including securing future funding
10. **Past Success:** Demonstrate proven track record of implementing conservation practices with specific, measurable results.
11. **Dissemination/Transferability:** Explain strategy to showcase new and refined restoration methods and techniques
12. **Ancillary Benefits:** Describe additional benefits that could result from your project



2016 TIMELINE



- ❖ NFWF encourages potential applicants to contact us with project ideas before submitting a proposal.

QUESTIONS or COMMENTS

Jon Scott
Manager, Southern Regional Office

Jonathan.Scott@nfwf.org

202-595-2609

