

WHAT IS YOUR SHORTLEAF PINE STORY?

If you are at this meeting you have one!











50186 A





TM

DATE

7/2/88

| P | L | A | % | S | A | A | E | P | B | S | P | % | C | D | | | | | | |
|----|---|-----|----|---|---|---|-----|---|---|----|----|---|----|-------|-----|---|-----|-----|---|---|
| L | A | S | S | L | X | X | L | M | E | O | R | S | C | B | | | | | | |
| O | N | P | L | O | S | S | E | A | D | I | O | P | R | H | | | | | | |
| T | T | O | P | + | - | V | T | R | L | T | T | V | N | C | | | | | | |
| 48 | 6 | 215 | 33 | 2 | 1 | 1 | 160 | 1 | | 11 | | 2 | 10 | → 122 | 4 | 6 | 122 | 2 | 4 | |
| | | | | | | | | | | 1 | 10 | 2 | 10 | 14 | 110 | 2 | 10 | 122 | 2 | 3 |
| | | | | | | | | | | 2 | 10 | 2 | 11 | 16 | 110 | 2 | 10 | 122 | 2 | 5 |
| | | | | | | | | | | 3 | 10 | 3 | 8 | 17 | 110 | 2 | 10 | 122 | 1 | 3 |
| | | | | | | | | | | 4 | 10 | 2 | 11 | 17 | 110 | 2 | 10 | 122 | 1 | 4 |
| | | | | | | | | | | 5 | 10 | 2 | 14 | 18 | 110 | 2 | 10 | 122 | 2 | 4 |
| | | | | | | | | | | 6 | 10 | 2 | 14 | 19 | 110 | 2 | 10 | 122 | 1 | 2 |
| | | | | | | | | | | 7 | 10 | 2 | 10 | 19 | 110 | 2 | 10 | 122 | 1 | 2 |
| | | | | | | | | | | 8 | 10 | 2 | 10 | 20 | 110 | 2 | 10 | 122 | 2 | 4 |
| | | | | | | | | | | 9 | 10 | 2 | 12 | | 110 | 2 | 10 | 122 | 2 | 4 |
| | | | | | | | | | | 10 | 10 | 2 | 12 | | 110 | 2 | 10 | 122 | 1 | 2 |
| | | | | | | | | | | 11 | 10 | 2 | 12 | | 110 | 2 | 10 | 122 | 2 | 4 |
| | | | | | | | | | | 12 | 10 | 2 | 11 | | 110 | 2 | 10 | 122 | 2 | 4 |
| | | | | | | | | | | 13 | 10 | 1 | 10 | * | 122 | 2 | 10 | 122 | 2 | 4 |

| | |
|--------------------------------|-------------|
| shortleaf pine trees/acre | 210 |
| shortleaf pine basal area/acre | 140 sq. ft. |
| shortleaf pine ave. dbh | 11 inches |

- 21 shortleaf on plot (painted?)
- could this stand have been planted? alt may be what plots 34-36 look like before the heavy mortality set in.
- nice timber
- this land type must have really been exposed up to allow a long pine to grow











Shortleaf Pine

INITIATIVE



RESTORING AN AMERICAN FOREST LEGACY












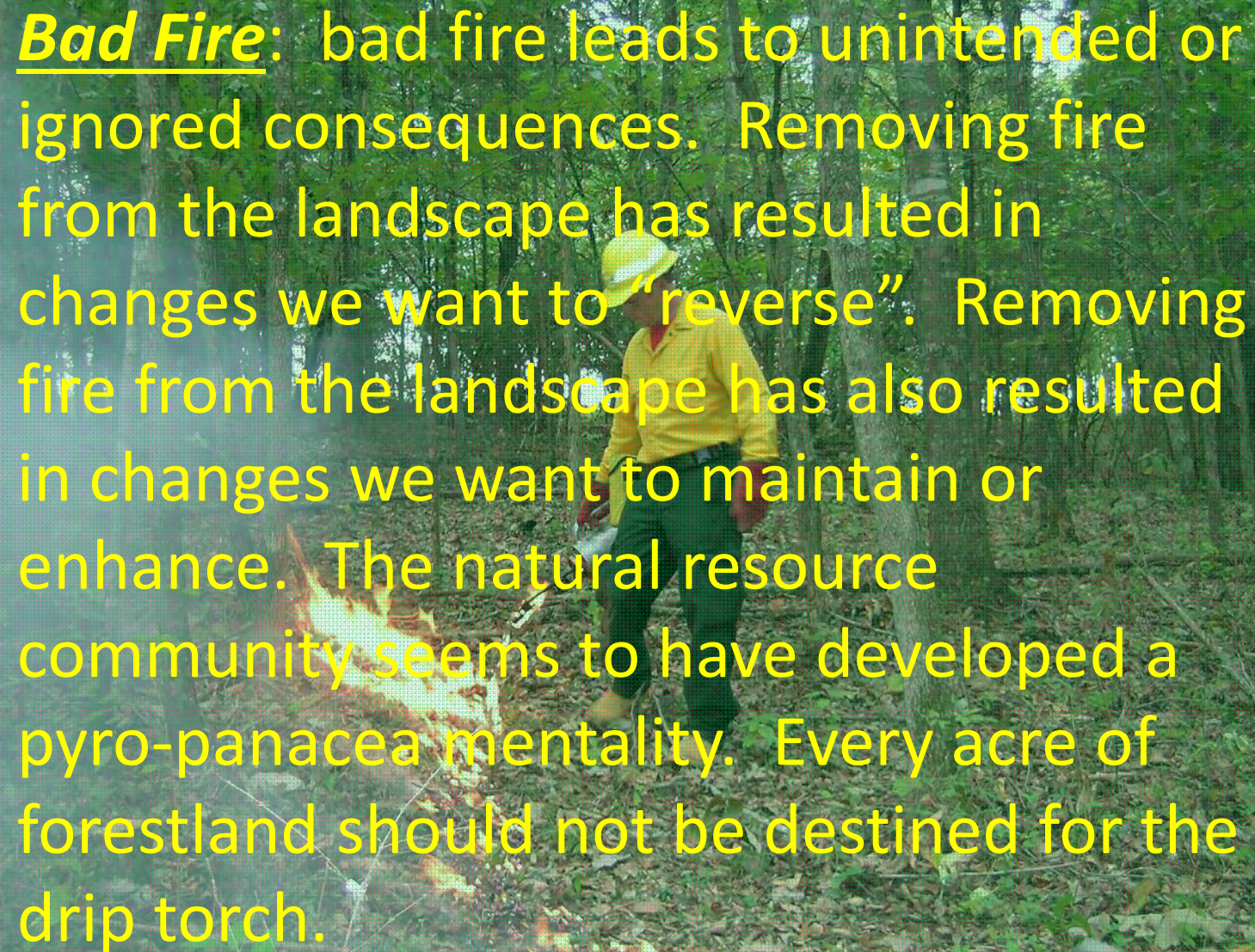


A firefighter in a yellow shirt and helmet is working in a forest. A fire is burning on the ground in the foreground. The text is overlaid on a green semi-transparent box.

Evil Fire: Evil fire destroys and kills. It will always be the Tennessee Division of Forestry's mission to eradicate evil fire from the landscape.

A firefighter in a yellow shirt and helmet is working in a forest. A controlled fire is visible in the foreground, burning through dry leaves and twigs. The firefighter is standing in the middle ground, looking towards the camera. The background is a dense forest of tall trees with green foliage. The text is overlaid on a semi-transparent green rectangular area.

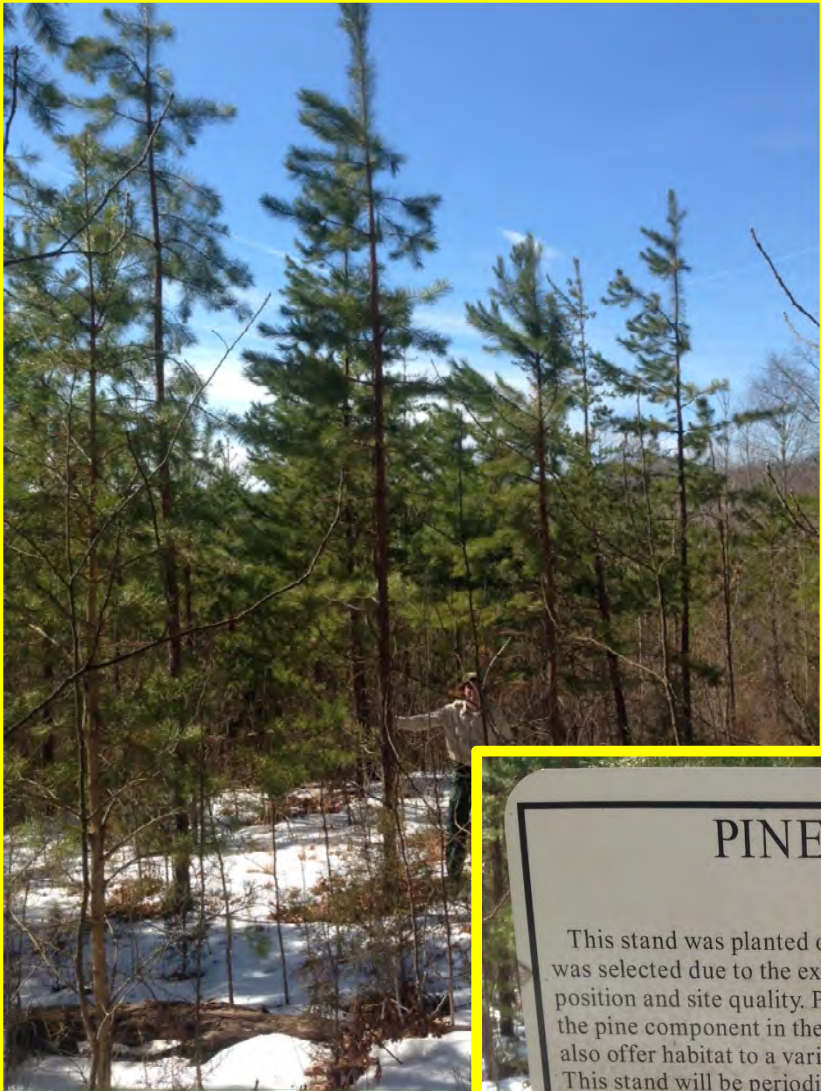
Good Fire: Good fire is fire put to work. Good fire is controlled and managed to achieve specific objectives with minimized collateral damage.

A firefighter in a yellow shirt and helmet is walking through a forest. In the background, a fire is burning, and the scene is hazy with smoke. The text is overlaid on a semi-transparent green box.

Bad Fire: bad fire leads to unintended or ignored consequences. Removing fire from the landscape has resulted in changes we want to “reverse”. Removing fire from the landscape has also resulted in changes we want to maintain or enhance. The natural resource community seems to have developed a pyro-panacea mentality. Every acre of forestland should not be destined for the drip torch.





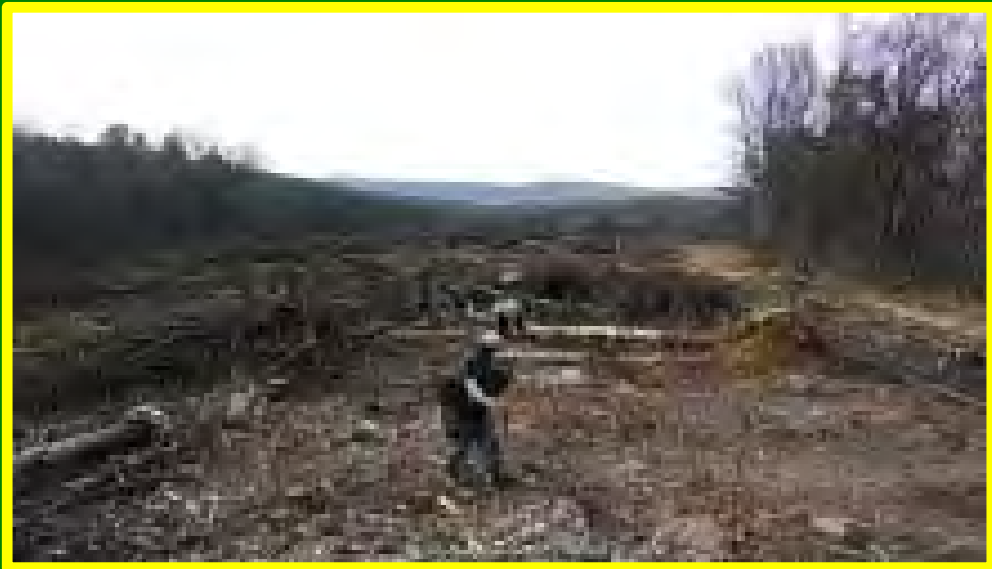


PINE PLANTATION

This stand was planted on a 12'x12' spacing in 2006. Shortleaf pine was selected due to the existing species composition, aspect, slope position and site quality. Pine plantations are instrumental in preserving the pine component in the overall landscape of the Forest. Pine stands also offer habitat to a variety of game and non-game wildlife species. This stand will be periodically burned to encourage production of low level browse, decrease fire fuel accumulation and to reduce the threat from invasive plant and insect species.

Chuck Swan State Forest 2006 Stand # 04046







09.23.2008



